



Broadwindsor Play Area:

A Not-So-Standard Playground Project

Introduction

One of the aspects of playground design and installation that the Huck Play team enjoys the most is not every play park is the same, and that certainly rang true for our Broadwindsor play area project.

While we thoroughly enjoy working on large commercial playgrounds, there's something truly special about working on smaller, localised projects.

We had the opportunity to do exactly that in Broadwindsor. It was also one of the first projects where we were able to put our powder-coated equipment to the test, and the end result certainly proves the quality of our work.

Our main aim was to provide an open community for the local families in the Dorset town where residents could come together and enjoy time outside.

From the feedback we've received, we know we achieved those goals and more - but not without its challenges!



An Overview of the Broadwindsor Park Project

We installed a series of different playground structures at this site, ensuring the park would accommodate children of a wide age range.

There are elements of **climbing, swinging, spinning, crawling and chilling** across the various features, which incorporate a range of powder-coated steel and rope-based equipment.

Eagles Nest Tree



The star of the show at this playground is our incredible Eagles Nest Tree, which is a part of our innovative Bird's Nest Tree Series.

The piece of kit stands **5.95 metres tall**, creating a space for climbing, scrambling and relaxing whilst looking out over the park. It features 3 of our iconic Huck Bird's Nest's® at varying heights, all interconnected with rope ladders and climbing ropes.

Net SeeSaw

A seesaw never fails to bring joy to a playground, and our Net SeeSaw is no exception!

We've taken a classic seesaw concept and put our rope-based twist on it to create a unique piece of play equipment. Instead of sitting down, children stand up on the net platform, hold on to the rope handles and move the seesaw up and down.

This has proven to be a **popular piece of the playground** because it's easy for the parents, carers and older children to get involved, too, which is what this project was all about.



Spinning Disc

We also installed a steel Spinning Dish that's proven to be a huge hit. This inclusive, bowl-shaped disc provides a place for children to perch and spin around at what feels like a thousand miles per hour!

It's a simple piece of equipment that's provided hours of fun for children and works amazingly well as part of this project.



Showcasing Our Powdercoated Playground Equipment

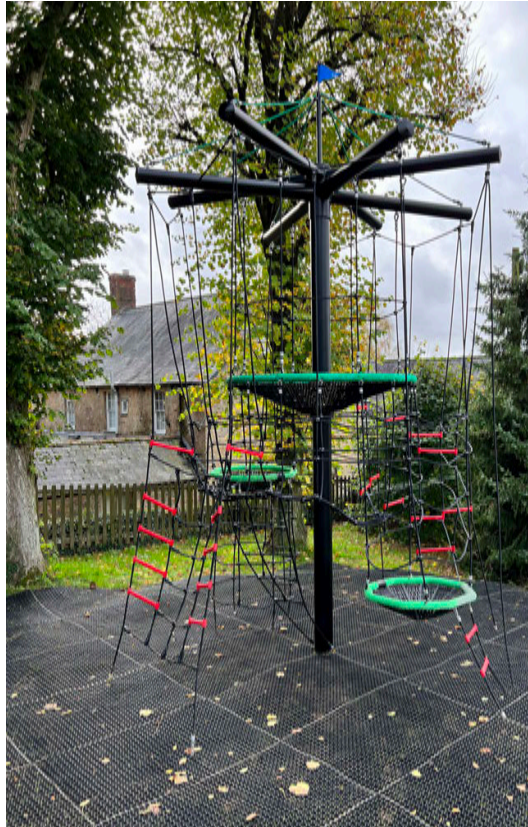
As a part of the Broadwindsor play area project, we were able to put our powder-coated equipment on display for the first time. The client and our team couldn't be happier with how it turned out.

We coated the steel frames of the Eagles Nest Tree and Net SeeSaw in a matte black powder-based paint that gives the equipment a smart-looking finish.

To really make the colour stand out, we also selected a **custom red, green and black rope and rope connector** colour combination that really brings the pieces to life.

Working with the client to create a playground that looked completely its own was a great experience, and the powder-coating worked amazingly well as part of this project.

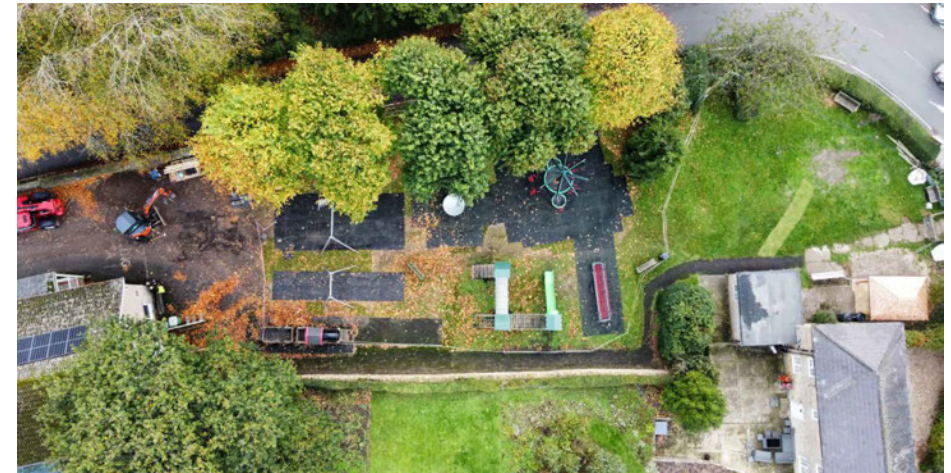
The end result is a safe, vibrant playground that won't suffer any wear or tear from weathering and can be enjoyed for years to come.



Challenges We Faced On This Project:

Testament to our team's work ethic and skill was the fact that we managed to overcome a number of challenges during the course of this project.

From the initial site survey, we noted that **the land was very uneven**, with lots of slopes and bumps that would make planning the layout of our play equipment even more important.



On top of that, there were a number of **protected trees** surrounding the site, as well as a redesign halfway through the installation due to **non-recorded drains**. Not to mention the downpours of rain our installation team had to work through!

But, we were determined to make this project a success. Our design team worked hard on drawing up the safest and most efficient plans taking into account the land layout, while our installation crew bravely battled the elements to get the job done.



It's safe to say that this project was a challenge, but thanks to the hard work of everyone involved, we were able to overcome all the obstacles and deliver an amazing end result.

We are extremely proud of our team for their determination and dedication!

“A tricky project with a very uneven site, protected trees, non-recorded drains and torrential rain! However, the infectious community spirit helped us battle through the elements to produce a fantastic play area for all ages.”

– *Tony Lucas, Huck Play Manager*

The Broadwindsor Park Today...



From when we completed the project to now, we've received messages of gratitude and thanks from the client and community for the successful transformation of the park.

The Broadwindsor park is now a thriving and popular destination for locals to come and enjoy outdoor activities with family and friends, and it's always great to hear that we are making a positive difference.

We hope the park provides many more years of fun and recreation for generations to come.

Give Back to Your Local Community with a Bespoke Huck Play Playground



Creating bespoke playground projects is what the Huck Play team thrive on, and we're always looking for new projects.

If you're interested in transforming a public space, and giving back to your local community with a Huck Play playground – get in touch with us today! We'd be delighted to work on your project.

We'll work closely with you at every stage of the process, from the initial designs of the equipment to the final installation, ensuring the result meets all your needs.

If you'd like to discuss any of our standard powder-coating options or want to kickstart your bespoke project, get in touch with us via Phone: **01308 425 100** or Email: **hello@huckplay.co.uk**.

We look forward to hearing from you!



HUCK
ROPE PLAY EQUIPMENT

Gore Cross Business Park
Corbin Way, Bridport, Dorset, DT6 3UX
Phone 01308 425100
www.huckplay.co.uk